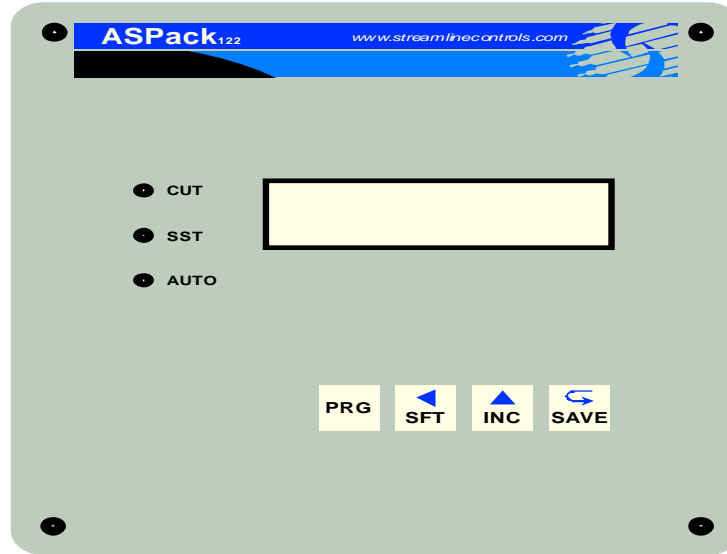


Front side of ASPack 122:



Parameters programming

To access the parameters programming, press PROG.

First line of the LCD display will show the name of the parameter –
“RC Delay - Sec”.

Second line of the LCD display will show the value of the parameter -
“x.xxx”

- Use INC SHIFT to update the value.
- Use SAVE to save the value of the current parameter & to switch to the next parameter.
- To exit the parameters programming, press PROG again.

List of Programmable Parameters:=

No	Parameter	Unit	Access Level	Description	Minm.	Maxm.
1	RC Delay – Sec	Seconds	User	Delay before Cutter Output is turned on in auto cycle	0.000	1.000
2	Test Mode	On/Off	Supervisor	Turning this parameter on will turn on the testing of digital outputs	Off	On

Program Mode Keyboard Operation

1. **PROG:** Online: To enter Application parameters programming.
Program: To exit Application programming.
2. **INC:** Online: RC Mode Run, provided controller is not in auto mode.
Program: To increment the digit selected.
Test: To select the next output to test.
3. **SHIFT:** Online: To display the Input/Output Status screen.
Program: To select the digit.
Test: To select the previous output to test
4. **SAVE:** Online: To switch the controller to manual mode
Program: To save the current parameter & to switch to next
Test: To turn on/off the selected digital output

Mode Selection Key Operation:

1. **AUTO :** Switches the controller to AUTO MODE.
2. **Manual:** Switches the controller to Manual Mode.

Operating Sequence:

AUTO: When AUTO MODE is turned on:

1. Wait Length Proximity Input to turn on
2. Wait Length Proximity Input to turn off
3. Start RC Delay
4. Wait RC Delay Over
5. Turn on Cutter Output
6. Wait Cutter Proximity Input to turn on

ASPack 122/1.1_Operating Manual

7. Wait Cutter Proximity Input to turn off
8. Turn of Cutter Output
9. Repeat from Step 1

RC- CUT: When RC Cut is turned on,

1. Turn on Cutter Output
2. Wait Cutter Proximity Input to turn on
3. Wait Cutter Proximity Input to turn off
4. Turn of Cutter Output
5. Cycle Over

20 x 4 LCD Display status:

Description of Application Window:

Line 1 : Mode: MANUAL : The controller is in manual mode.

AUTO: The controller is in auto mode.

RC-CUT: The controller is in RC Cutting mode.

Line 2 : Current process status display.

Various Process Status Messages:

Sr	Message
1	Wait Lngth-In On
2	Wait Lgth-In Off
3	Wait Cuttr-In On
4	Wait Cuttr-In Off
5	Wait RC Delay

Description of Status Window:

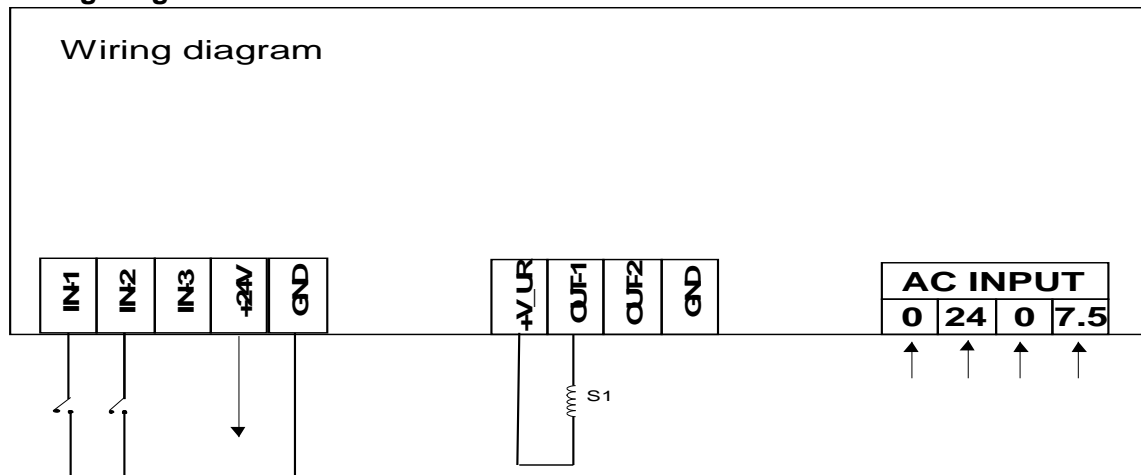
Input: 01: 0 to 1 shows status of 2 inputs, Present digit shows presence of input.

Output:0: 0 shows status of 1 output, present digit shows presence of output.

Input & Output List :

INPUT & OUTPUT LIST						
In Out List						
Product Code : ASPack 122/1.1/						
Output List			Input List			
Sr No	Solenoid No	Name	Sr No	Input No	Name	
OUT	S1	Cutter	IN1	LS1	Length Proximity	
			IN2	LS2	Cutter Proximity	

Wiring Diagram :



STREAMLINE CONTROLS PVT LTD.	
DRG NAME / NO : ASPack 122/1.1 WIRING DIAGRAM	
REV DATE :	10-MAR-2016
DRG BY:	Nilay patel
VERIFIED & APPROVED BY:	Utkanth bhandari