

Graphical Touch (With / Without) PLC for Injection Molding M/c

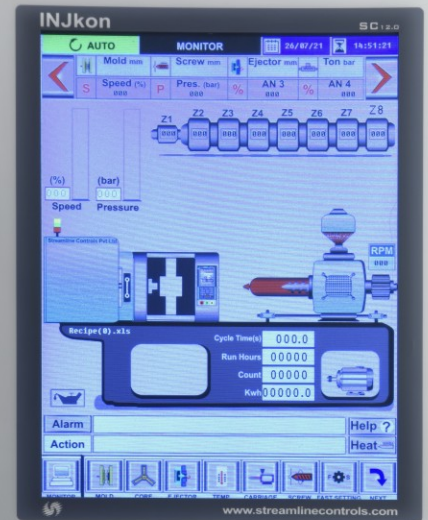


Option available without Touch 12.1" TFT Model : ACME III

INJkon SC 12.0 / ACME III



Combi Card IO interface (Single) card



Features

- Rich color graphical touch 12.1" TFT with 800*600 resolution (Optional)
- Dual CPU System :
 - 1) 8 bit / 100 MIPS CPU for efficient machine operations
 - 2) 32-bit ARM Cortex - M3 CPU for Smart GUI
- Feather touch 69 keys with LED indication for safe & efficient machine operations
- Euromap 67 standard IMM robot Interface available
- Up to 16 zone adaptive PID / percentage heat control suitable for double color injection molding machine also
- USB interface facilitates easy sequence programming, upload & download the recipe as well as the production data
- Compact combi (single) card IO interface
- Recipe storage with alphanumeric name up to 200 nos.
- Smart IOT connectivity 10/100 MBPS ethernet interface for data logging to remote server
- Optional modules available for Stepper Motor based proportional valve as well as Rotary encoder
- In-built 8 GB SD card for machine for
 - ➔ Last 10,000 shot data
 - ➔ 365 days Hourly / Daily data
 - ➔ Last 10,000 interlock history
 - ➔ 10,000 program change history

We Appreciate Both OEM and Retrofitting Inquiries

* Thanks to Continuous Innovations, Specifications & Features are Subject to Change

Authorised Dealer

After Sales Support

Ph. No.: +91 9328808665

Email: customer@streamlinecontrols.com

Office : 305-306, Times Square 1, Thaltej - Shilaj Road, Nr. Baugban Circle, Ahmedabad-380059. Guj - INDIA
M: +91 9328808662 | Tele Fax : +91 79 4005 4196 | molding@streamlinecontrols.com

Website: www.streamlinecontrols.com

Works: B-213/214, GIDC, Electronics Estate, Sector-25, Gandhinagar-382044. Gujarat-INDIA

Sales & Service Network: Mumbai | Rajkot | Chennai | Delhi

